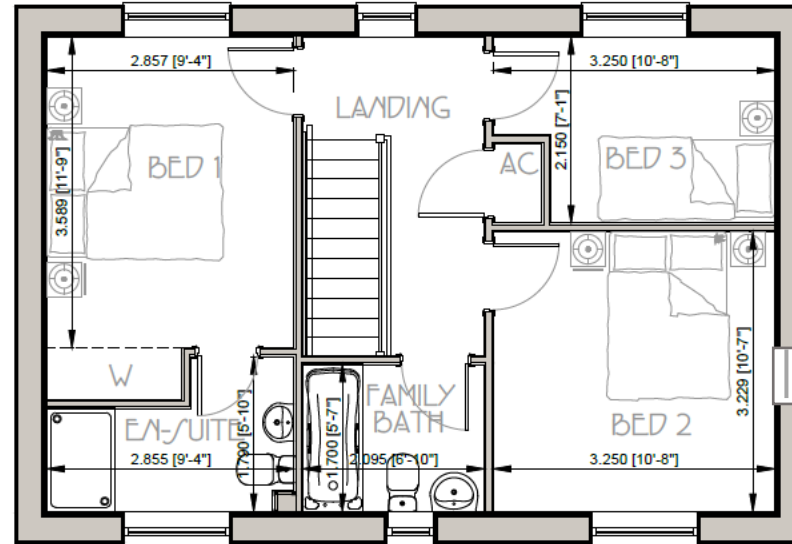
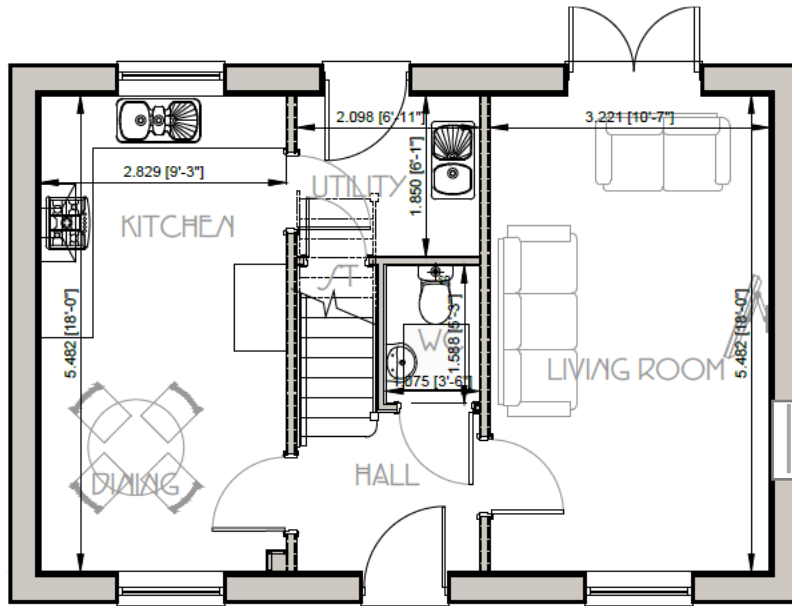


Comber – 3 Bedroom Floor Plan



	Room	Width		Depth	
		Meters	Feet	Meters	Feet
Ground Floor	Living Room	3.22	10'-7"	5.48	18'-0"
	Kitchen / Dining Room	2.83	9'-3"	5.42	17'-9"
	Utility	2.10	6'-11"	1.85	6'-1"
	W.C.	1.08	3'-6"	1.59	5'-3"

	Room	Width		Depth	
		Meters	Feet	Meters	Feet
First Floor	Bedroom 1	2.86	9'-4"	3.59	11'-9"
	Ensuite 1	2.86	9'-4"	1.79	5'-10"
	Bedroom 2	3.25	10'-8"	3.23	10'-7"
	Bedroom 3	3.25	10'-8"	2.15	7'-1"
	Bathroom	2.10	6'-10"	1.70	5'-7"

Floor plans are for illustrative purposes only. Properties may also be built 'handed' (mirror image) of those illustrated. Midland Heart reserves the right to alter and change certain aspects of a property – for exact plot specification please request a viewing. All dimensions are approximate only & estimate the widest and longest points of each room. As they are only approximate, they should not be used for carpet sizes, appliance spaces and furniture. These particulars do not form part of a contract or warranty.