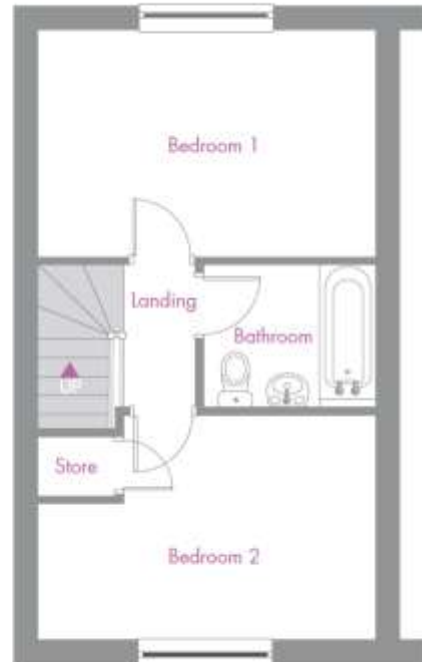
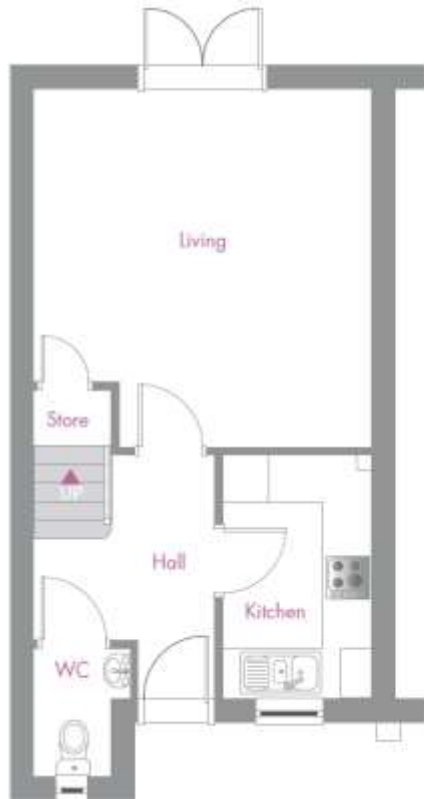


# 2 Bedroom Floor Plan



## 2 Bedroom Semi-Detached House

Living	4.65m x 4.35m	15'3" x 14'3"
Kitchen	3.17m x 1.94m	10'5" x 6'4"
Bedroom 1	4.35m x 2.94m	14'3" x 9'8"
Bedroom 2	4.35m x 2.92m	14'3" x 9'7"
Bathroom	2.24m x 1.90m	7'4" x 6'3"

Total Floor Area: 68.60m<sup>2</sup> - 738.40 sq.ft

*Please note: All dimensions are taken from the widest and longest points of each room. Some properties will be 'handed' (mirror image) to floorplan shown.*